

苏州裕景泰贸易有限公司
Suzhou YogiAnt Trading Co., Ltd.

我们的服务网络:

裕景泰总部 (YOGIANT HEAD OFFICE)

地址: 江苏省苏州工业园区旺墩路269号圆融星座21楼
电话: 0512-87899635 传真: 0512-65017117 邮箱: yogiant@yogiAnt.com

华东销售公司 (EAST CHINA SALES COMPANY)

地址: 上海市虹口区汶水东路29号裕辉大厦1005室
电话: 谏先生 (+86) 13918892949

华南销售公司 (SOUTH CHINA SALES COMPANY)

地址: 广东省广州市萝岗万达广场B1栋808-809
电话: 罗先生 (+86) 13824471805

中南销售公司 (CENTRAL SOUTH SALES COMPANY)

地址: 江苏省无锡市新区城南路32-7
电话: 朱先生 (+86) 15995705800

华北销售公司 (NORTH CHINA SALES COMPANY)

地址: 天津市北辰区顺义道中储大厦220室
电话: 王先生 (+86) 15002242828

国贸公司 (INTERNATIONAL TRADING COMPANY)

地址: 上海市虹口区汶水东路29号裕辉大厦1005室
电话: 尹先生 (+86) 13776056686 邮箱: iain@yogiAnt.com

越南胡志明办事处 (HOCHIMINH OFFICE IN VIETNAM)

地址 (ADD): 10F Nam A Bank Tower, 201-203 CMT8 St, Ward 4, District 3, HCM City (Vietnam office)
电话: 尚先生 (+86) 18896997790 (+84) 0904235733 邮箱: willson@yogiAnt.com

印尼雅加达办事处 (JAKARTA OFFICE IN INDONESIA)

地址 (ADD): Springhill Office Tower, 11Floor, Unit C, Jl. H Benyamin Suaeb Blok D6 Kemayoran, Jakarta
电话: 胡先生 (+86) 1518718008 邮箱: kevin@yogiAnt.com

裕景泰國際有限公司 (YOGIANT INTERNATIONAL LIMITED)

地址: 香港九龙湾宏光道一号亿京中心B座28楼B室
地址 (ADD): Flat B28/F Tower B Billion Ctr 1 Wangkwong RD Kowloon Bay Hong Kong
电话: 葛小姐 (+86) 18896997787 邮箱: elsa@yogiAnt.com

网址: <http://www.yogiAnt.com/> 邮编: 215028

邮箱: yogiant@yogiAnt.com



苏州裕景泰贸易有
限公司微信公众号



YOGIANT

PRODUCT MANUALS

—— 产品手册 ——



CORPORATE PROFILE

企业简介

苏州裕景泰贸易有限公司成立于2015年5月26日，注册资本(实到)1.59亿人民币，公司专业从事国际和国内钢铁、建材、机械设备的贸易，业务品种涵盖钢铁产品、管桩行业专用设备和辅料、混凝土制品等。经过三年发展，苏州裕景泰已经在上海市、广东省、江苏省、天津市、浙江省、山东省、河北省部署了较为完善的服务网络，并在香港、越南胡志明市、印尼雅加达区域设立了驻外服务网点。2017年，苏州裕景泰营业收入超100亿人民币，并荣登2017年度中国工业线材榜第一名、中国优特钢贸易百强第二名。

苏州裕景泰自创立以来，背靠建华建材集团的实体支撑，秉承“诚信经营、互利共赢”的经营理念，尊崇“供应商为源，员工为本，客户为上”的“三个上帝”思想，充分利用控股股东资本和资信优势，不断开拓新的业务领域，真诚为广大客户提供优质的产品与服务。

以工匠之心做事，以感恩之心待人。苏州裕景泰紧跟时代脉搏，与时俱进，以“合伙人”机制广纳英才，实实在在地践行“共建、共享、共赢”的核心价值观，致力于构建卓越的综合性贸易服务平台，从而为客户、供应商、员工、股东创造更大的价值！

Suzhou Yogiant Trading Company Limited, was founded on May 26th, 2015, with the registered capital (actual subscription) of 159 million yuan. Yogiant specializes in the international and domestic trade of steel, construction materials, machinery and equipment, with great business range covering steel products, special equipment and accessories for concrete pile industry and concrete products. With the development of three years, Suzhou Yogiant has gradually built well-established service networks in Shanghai, Guangdong, Zhejiang, Shandong, Jiangsu, Tianjin and Hebei, and also has set up overseas service networks in Hong Kong, Ho Chi Minh and Jakarta. In the year of 2017, the total revenue of Yogiant exceeds 10 billion yuan, and ranks No.1 in China's Industrial Wire Enterprises of 2017 and No.2 in China's Top 100 Enterprises for Special Steel Trade.

Backed by the business entity of Jianhua Group, Suzhou Yogiant has adhered to its business philosophy of "honest operation, mutual benefit and win-win cooperation" and advocated the idea of "regarding suppliers as source, employees-oriented and customers go first" since its foundation in 2015. Yogiant would like to make full use of its advantages in resources, capital and creditability, and continuously develop new business areas, and sincerely provide customers with quality products and services.

Be professional at work, and be grateful in life. Suzhou Yogiant always follows this principle and keeps pace of the times. The "partnership" mechanism is adopted in recruitment to attract more talented people, which also clearly demonstrates the core value of "co-construction, sharing and win-win cooperation". Yogiant is dedicated to setting up an excellent platform for comprehensive trading service, thereby creating more value for its customers, suppliers, employees and shareholders.

SERVICE NETWORK

服务网络



Cooperative partners

合作钢厂



 济钢集团 JIGANG JIGANG GROUP	 ANSTEEL 鞍钢集团	 包钢集团 BAOGANG GROUP	 南京钢铁集团 Nanjing Iron&Steel Group Corp.	 BAOSTEEL 宝钢股份
 银钢集团 BINXI STEEL GROUP	 德龙钢铁 DELONG STEEL	 国丰钢铁 GUOFENG IRON AND STEEL	 河钢集团 HBIS GROUP	 西城钢铁 XICHENG STEEL
 西王特钢 XIWANG SPECIAL STEEL	 马钢集团 MA STEEL 马鞍山钢铁集团有限公司	 沙钢集团 SHAGANG GROUP	 河北敬业集团 HEBEI JINGYE GROUP	 本钢集团有限公司 BENXI STEEL GROUP CORPORATION
 津西集团 Jinxu Group	 REAFON 瑞丰钢铁	 五矿钢铁 MINMETALS STEEL	 抚顺特钢	 申特集团 SHENTE STEEL GROUP
 建龙集团 JIANLONG GROUP	 ZENITH 中天钢铁	 方大集团 FANGDA GROUP	 日照钢铁 RIZHAO STEEL	 唐钢集团 TANGSTEEL GROUP
 迁安市九江线材有限责任公司 QIANANSHI JIUJIANG WIRE CO., LTD	 山东富伦钢铁有限公司 Shandong Fulun Steel Company Limited		 江苏永钢集团有限公司 JIANGSU YONGANG GROUP CO., LTD.	
 北台钢铁(集团)有限责任公司 BEITAI IRON&STEEL GROUP CO.,LTD.	 BAOWU 武汉钢铁集团鄂城钢铁有限责任公司 WUHAN IRON & STEEL GROUP ECHENG IRON & STEEL CO., LTD.			



Staff activities

员工活动



合伙人招募仪式
Partner Recruitment Ceremony



合伙人大会
Partner Conference



2017年中工作会议
2017 Midyear Working Conference



专项培训
Professional Training



春季拓展
Spring Expansion Activity



秋季旅游
Autumn Tourism



徒步拉练
Hiking Tour



家属联谊会
Family Sodality



女生节插花活动
Flower-arranging Activity



MAIN PRODUCTS
 主营产品

Steel products

 钢材产品


线材 Wire Rod	牌号 Product Grade	规格范围 Diameter(mm)	执行标准 Executive Standard	主要用途 Main Application		
冷墩用盘条 Rod for Cold Heading	35K	5.5-14	JIS G3507	4.8-12.9各个强度级别的法兰螺栓、内六角螺栓、气缸螺栓等螺栓及螺母、连杆、轴、销子、顶杆等标准件跟非标准件。 Standard and non-standard products like bolts(flange bolts,hexagon bolts and gas cylinder bolts,etc.)and nuts,screws,axles,spindles and mandrels,etc. of various grades in strength from 4.8 to 12.9.		
	22A	5.5-14	GB/T6478			
	ML35	5.5-14				
	ML08AI	5.5-45				
	ML40CR	5.5-45				
	SWRCH 10K	6.5-16	JIS 3507-2: 2005			
	SWRCH 8A					
	SWRCH 35K					
	SWRCH 22A					
	SWRCHB323	16-45	JIS G3508-1: 2005			
	SG40K	6.5-45	SGJX-011-2007			
	4140	16-45	SGJX-008-2007			
	40ACR	6.5-45	SGJX-017-2007			
	15CRNICU	16-36	SGJX-009-2008			
	SWRCH6A-SWRCH22A	5.5-45	Q/320582 SG7-2009			
	SWRCH10K-SWRCH50K					
	SG35K					
	SCM435-1					
	SCR440	5.5-45	GB/T 6478-2001			
	ML20MNTIB					
ML35CRMO						
ML42CRMO	5.5-45	JIS G 3507-1:2005				
SWRCH6A-SWRCH22A						
SWRCH10K-SWRCH50K	16-45	Q/320582 SG302-2009				
SG1008						
SG195						
SG215						
SG235	5.5-20	GB/T701-2008	拉丝 Drawing wire			
Q195						
Q215						
Q235						
SAE1006				5.5-16	ASTMA510M-08	铁丝铁钉, 钢丝网, 冷轧母材 Iron wire,iron nail, steel mesh, Cold-rolled base
SAE1006B						
SAE1008						
SAE1008B						
SAE1010B						
SAE1012B						
SAE1015B						
SAE1017B						
SAE1021B						
SAE1022B						
BK1010T		BLK178-2016				



MAIN PRODUCTS

主营产品

Steel products

钢材产品



线材 Wire Rod	牌号 Product Grade	规格范围 Diameter(mm)	执行标准 Executive Standard	主要用途 Main Application
光圆钢筋盘条 Wire Rod for reinforcement with plain surface	HPB300	8-16	GB1499.2-2008	工业和民用建筑用钢 Industrial and civil constructional steel
	HPB235	6-16		
螺纹钢 Deformed Steel Bar	HRB400(E)	6.0-40	GB1499.2-2007	房屋、公路和桥梁等工业和民用建筑用钢 Industrial and civil constructional steel for house, highway and bridge, etc.
	HRB335(E)	16-25		
	HRB500(E)	6-12		
	HRB600	6-12	技术协议	
	460A,460B,B500B,B500C	8-40	BS4449-1997/BS4449-2005	
	SD400, SD500	10-41	KS D3504; 2016	
	SD600	10-32		
	GR40,GR60,GR75,GR80	10/13/16/19/22 /25/29/32/36	ASTMA615/A615M	
	CA-50	6.3/8/10/12.5/16 /20/22/25/32/40	ABNT NBR7480:2007	
	BJTS30,BJTS35, BJTS40	10-40	SNI 2052-2014	
B500B	10-40	MS146-2014		
螺纹钢 Deformed Steel Bar	DIN B500B	10-40	DIN488-1-2-6	轮胎子午线、钢帘线 Tire meridian line and tire cord
	500E	12-20	AS/NZS 4671-2001 +A1: 2003	
	500N	12-36		
硅锰钢热轧盘条 Hot-Rolled Rod for Martiniel Steel	20MNSI	8-14	GB/T24587	预应力混凝土管桩用钢棒 Steel PC bar for concrete tubular pile
	30MNSI			
	30SI2MN			
焊接用钢 Welded Steel	ER70S-3	5.5-6.5	Q/320582 SG18-2009	气体保护焊丝 Gas shielded welding wire
	ER70S-4			
	ER70S-5			
	ER70S-6			
	SG70S-6			
	ER50-6E			
	H08A			
	H08MNA			
H10MN2A	SGJX+002-2006	焊条Welding rod		



MAIN PRODUCTS
 主营产品

Steel products

 钢材产品


线材 Wire Rod	牌号 Product Grade	规格范围 Diameter(mm)	执行标准 Executive Standard	主要用途 Main Application
预应力钢丝、钢绞线用盘条 PC Wire Rod for Steel Wire and Strands	SWRH77BCR	11-13	Q/320582 SG6-2010	各种规格和级别的高强度低松弛预应力光面钢丝、刻痕钢丝、阴螺纹钢丝和钢绞线等。 High-strength low-slackness PC smooth-surface steel wire, indented wire, inside thread steel wire and steel strands of various specifications and levels.
	SWRH82BCR			
	SWRH77B	8-13		
	SWRH82B	5.5-8		
	SG82B			
	SWRH82B-1			
优质碳素钢盘条 Quality Carbon Steel Wire Rod	08-85	5.5-20	GB/T 4354-2008	钢丝绳、弹簧钢丝、结构件等 Steel Wire, spring steel wire, structural member, etc.
	15MN-70MN			
	1006		Q/320582 SG17-2010	
	1008-1095			
	45#-80#	5.5-25	GB/T 4354-2008	
铜包钢丝用盘条 Wire Rod for Copper-clad Wire	SWRM6/8	5.5-20	JIS G3505-2004	铜包钢丝 Copper-clad steel wire
	SG06	5.5-8	Q/320582 SG101-2009	
	SG15			
	SG55			
易切削钢 Free-cutting Steel	Y12	5.5-20	GB/T 8731-2008	电器产品、金属器皿等零部件 Spare parts of electric equipment and metal appliances
	Y12PB			
	Y15			
	Y40MN			
	1214			
	1214BI	5.5-14	SGJX-016-2007	
	1215			
型材 Section Steel	钢轨Railroad Rail	(134-192)*(114-150)	U71Mn、U75V	工字钢、槽钢、角钢广泛应用于工业建筑和金属结构，如厂房、桥梁、船舶、农机车辆制造、输电铁塔，运输机械、农机配件、工具等 Joist steel, Box steel and Angle steel are widely used in industrial buildings and metal structures, such as plant, bridge, ship, agricultural vehicle manufacturing, power transmission tower, transportation machinery, agricultural machinery parts, tools, etc
	起重轨Crane Rail	(130-150)*(130-150)	QU80、QU100	
	H型钢 H-beam Steel	(250-400)*(150-300)	Q235B、Q345B、Q420B、Q355NH	
	角槽钢 Rolled Angle And Channel Beam	25a-36a	Q235B、Q345B	



MAIN PRODUCTS
 主营产品

Steel products

 钢材产品


线材 Wire Rod	牌号 Product Grade	规格范围 Diameter(mm)	执行标准 Executive Standard	主要用途 Main Application
帘线钢 Cord Steel	C70DA	5.5-6.5	Q/320582 SG19-2009	胎圈钢丝、胶管钢丝 Bead wire and hose wire
	C72DA			
	C80DA			
	C82DA			轮胎子午线、钢帘线 Tire meridian line and tire cord
	SG72A			
	SGLX72A			
SGLX82A				
轴承钢 Bearing Steel	GCR15	5.5-20	GB/T 18254-2002	轴承滚动体及套圈 Bearing rolling part and ferrule
弹簧钢丝用盘条 Wire Rod for Spring Steel Wire	65	5.5-20	GB/T 1222-2007	悬架簧和气门簧、减震器和离合器簧、制动弹簧 等用途弹簧钢丝 Springs for applications including suspension spring, air valve spring, spring for shock absorber and clutch spring, brake spring, etc.
	70			
	65MN			
	60SI2MNA			
	55SICRA			
	50CRVA		YB/T 5365-2006	
	65MN			
	60SI2MNA			
	55SICRA			
	65MN			
55SICRA	Q/320582 SG16-2009			
60SI2MNA				
中高碳钢盘条 Medium-and-high Carbon Steel Wire Rod	SG72A	5.5-20	Q/320582 SG6-2010	碳素弹簧钢丝、优质碳素结构钢丝、制绳钢丝、镀锌钢丝、低合金镀锌钢绞线、预应力钢丝和钢绞线。 Carbon spring steel wire, quality carbon structural wire, rope-making steel wire, galvanized steel wire, low-alloy galvanized steel stands, PC steel wire and steel strands, etc.
	72B-1			
	SWRH27-SWRH37			
	SWRH42A(B)-SWRH82A(B)	5.5-20	JIS G3506: 2004	
	SWRH27-SWRH37			
SWRH42A(B)-SWRH82A(B)				



MAIN PRODUCTS
 主营产品

Steel products
 钢材产品


卷板 Coil	产品类别 Product Category	牌号 Grade	执行标准 Standard Applied	规格	
				Width mm	Thickness mm
热轧卷板 Hot Rolled Steel Coils and Sheets	普碳结构钢 Carbon Structural Steel	Q195~Q275	GB/T 700	/	/
	热轧低碳钢 Hot-rolled Low Carbon Steel	SPHC、SPHD、 SPHE	JIS G3131		
	普通结构用钢 Structural Steel	SS330、SS400、 SS490、SS540	JIS G3101		
	管线用钢 Pipeline Steel	S175~S555 L175~L555 A,B,X42~X80 J55	GB/T 14164		
			GB/T 9711.1		
			API SPEC 技术协议 Techno-agreement		
酸洗卷板 Pickling Steel Coils	普通及冲压用板CQ、DQ	SPHC、SPHD、 SPHE	Q/HG001	900~1650	1.8~4.5
冷轧卷板 Cold Rolled Steel Coils and Sheets	普通冷板CQ	SPCC、DC01	厚度/Thickness:0.25~2.0 宽度/Width:900~1650 内径/Inner Diameter:610	/	/
	冲压级别DQ	SPCD、SPCE、 SPCF、DC03、 DC04、DC05			
	家电专用Household	SPCC-J1 SPCC-J2 SPCC-J3 SPCD-J2 SPCC-KL			
中厚板 Hot Rolled Steel Plates	普碳结构钢 Carbon Structural Steel	Q195~Q275	GB/T 700	1700~3200	8~80
	低合金高强度 High Strength Low Alloy Structural Steel	Q345~Q460	GB/T 1591	1700~3200	8~80
	船板钢 Hull Structural Steel	A、B、D、A32、A36、 D32、D36、E、E36	ABS, BV, DNV, GL, KR, LR, NK, RINA, CCS	1800~3200	10~38
	压力容器用钢 Steel Plates For Boilers And Pressure Vessels	Q245R、Q345R、 Q370R、16MnDR	GB 713、GB 3531	1700~3200	8~80
	管线钢 Pipeline Steel Plates	X42~X70	API SPEC 5L	1800~3200	8~25
	桥梁用结构钢 Structural Steel For Constructions	Q235q~Q420q	GB/T 714	1700~3200	8~50
	建筑结构钢 Structural Steel For Constructions	Q235GJ~Q420GJ	GB/T 19879	2000~3200	8~50



MAIN PRODUCTS
 主营产品

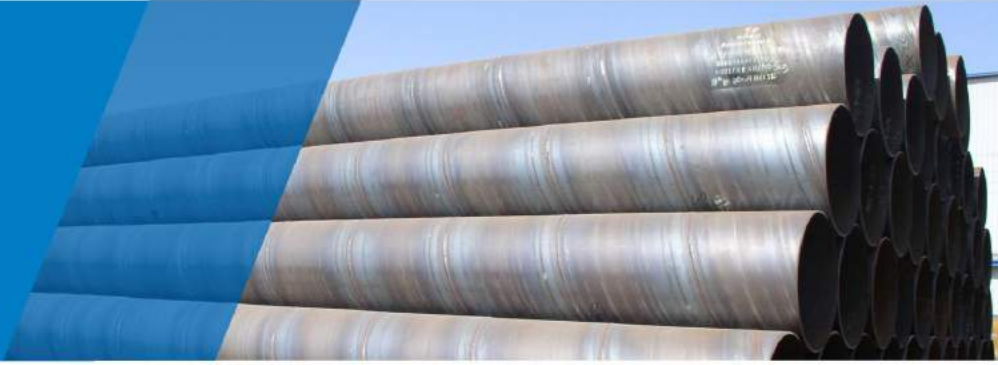
Steel products
 钢材产品


卷板 Coil	产品类别 Product Category	牌号 Grade	执行标准 Standard Applied	规格	
				Width mm	Thickness mm
碳素结构钢 低合金结构钢 热轧钢带 Structural carbon steel Structural low alloy steel Hot-rolled steel strips	带钢 Strip steel	Q195、Q215、 Q235、ZT01、 ZT03、ZT08	GB/T3524-2005	1.5-6.0mm x 155-400mm	
冷轧卷板 Cold Rolled Steel Coils and Sheets	汽车专用Auto	ST37-2G SPCC-CP SPCD-C1 SPCD-C2	厚度/Thickness:0.25~2.0 宽度/Width:900~1650 内径/Inner Diameter:610	/	
	其他专用Others	SPCC-LT SPCC-FM H50W800 H50W600			
镀锌卷板 Hot-Dipped Galvanized Steel Coils and Sheets	热浸镀锌卷 Hot-dip galvanized	普通镀锌板CQ	SGCC、DX51D+Z、 CS A、CS B	厚度/Thickness:0.25~2.0 宽度/Width:900~1650 内径/Inner Diameter:508/610	
		冲压镀锌板DQ	SGCD1、DX53D+Z		
		普通结构镀锌板 Structural	S250GD+Z、S280GD+Z、 SS33		
	普通镀锌板CQ	高强镀锌板 High Strength	S320GD+Z、S320GD+Z、 SS50-1、S390GD+Z/ SGC490、SGC540、 SGC570	厚度/Thickness:0.25~2.0 宽度/Width:900~1650 内径/Inner Diameter:508/610	
		普通镀锌板CQ	DX51D+Z/DX51D、 CS B、SGCC		
		普通结构用镀锌板 Structural	SGH340、SGH400、SS37 S250GD+Z、SGC400		
高强结构用镀锌板 High Strength	SS50-1、SGH440、 SGC440、G450 S390GD+Z、S450GD+Z				
电镀锌卷板 Electrolytic Galvanized Steel Coils and Sheets	电镀锌板 Electro-galvanized	SECC、SECCN、 SECD、SECE	Q/HG026 JIS G3313	900~1300	0.25~1.5
彩涂卷板 Color Coating Steel Coils and Sheets	普通用途CQ	DX51D+Z CGCC、CGCD1	Q/HG018 Q/HG008	900~1350 0.12~1.5	
	结构用 Structural	CGC340、CGC400、 CGC440	Q/HG008		



MAIN PRODUCTS 主营产品

Steel pile 钢桩



钢管桩 Steel pipe pile

用于码头、桥梁、海上平台之各种超长（单根长度可达100米）、超大（外径可达6米）和超重（单根重量可达200吨）钢管桩。材质从普通材质到低合金高强钢，依据项目的要求可专门定制。另外，可根据项目要求对钢桩的全长或者部分长度进行各种各样的防腐。

Various kinds of ultra-length (single length could be up to 100 meter), ultra-big (out diameter could be up to 6 diameter) and ultra-heavy (single weight could be up to 200 metric tons) steel piles which are mainly used for pier, bridge, offshore platforms etc.. The materials from normal steel to low alloy high strength steel which could be customized according to project requirements. Moreover, the steel pile could be all or part anti-corrosive according to project requirements.

钢板桩 Steel sheet pile

热轧Z型钢板桩： DZ12-770, DZ13-770, DZ13-770, DZ17-700, DZ18-700, DZ19-700, DZ2-700, DZ24-700, DZ26-700, DZ28-700, DZ36-700, DZ38-700, DZ40-700, DZ42-700, DZ44-700, DZ46-700, DZ48-700, DZ50-700, DZ52-700

热轧U型钢板桩： SPUII, SPUIII, SPUIIIA, SPUIV, SPUIVL, SPUIVIL, SPUIIW, SPUIIIW, SPUIVW

冷弯Z型桩和冷弯U形桩，可设计和生产出性能和耗材量完全等同于以上热轧钢板桩的规格。除此以外，还可以根据项目的需求，定制出特殊的规格。

Hot rolled Z shape steel sheet pile: DZ12-770, DZ13-770, DZ13-770, DZ17-700, DZ18-700, DZ19-700, DZ2-700, DZ24-700, DZ26-700, DZ28-700, DZ36-700, DZ38-700, DZ40-700, DZ42-700, DZ44-700, DZ46-700, DZ48-700, DZ50-700, DZ52-700

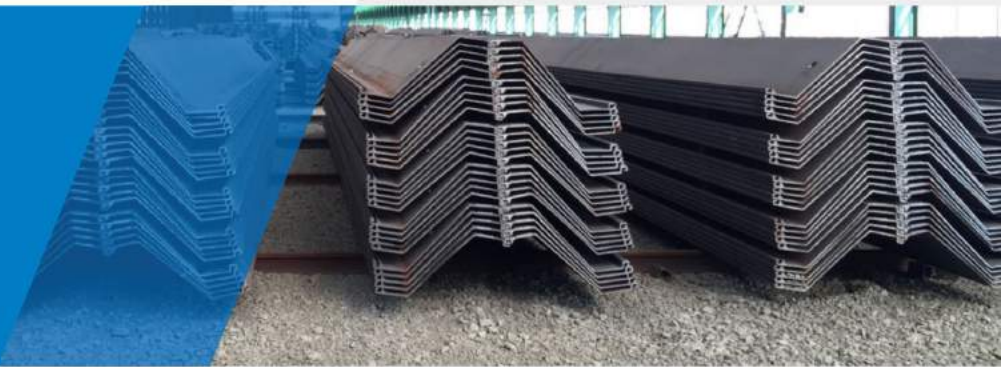
Hot rolled U shape steel sheet pile: SPUII, SPUIII, SPUIIIA, SPUIV, SPUIVL, SPUIVIL, SPUIIW, SPUIIIW, SPUIVW

Cold rolled Z shape pile and U shape pile, the performance and consumables could be designed and manufactured to exactly the same as the specifications of the above mentioned hot-rolled steel sheet piles. Moreover, special specifications could also be customized according to project requirements.



MAIN PRODUCTS
 主营产品

Steel pile

 钢桩


H型钢桩及H型钢梁 H shape steel pile and H shape steel beam

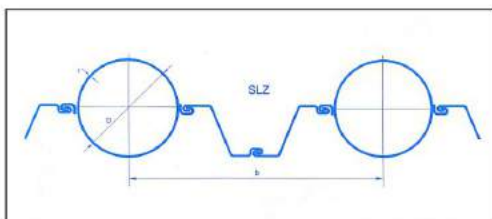
可按照中国国标(GB/T11263)、美标(ASTM A6), 英标 (BS4-1) 澳标 (AS3679.1) 日标 (JIS G3192) 供应热轧H型钢。材质从普通材质到低合金高强度钢, 使用环境可以适应炎热的热带到高寒的极地。另外对于热轧生产不了的H型钢, 可以供应大尺寸的焊接H型钢。

We could supply hot rolled H shape steel according to China National Standard (GB/T11263), American Standard (ASTM A6), British Standard (BS4-1), Australian Standard(AS3679.1), Japanese Standard (JIS G3192). The materials from normal steel to low alloy high strength steel, and it could adapt to different operating environment such as hot tropical and cold polar. Moreover, Regarding to the H shape steel which could not be produced by hot rolled, we could supply with ultra-size welded H shape steel.

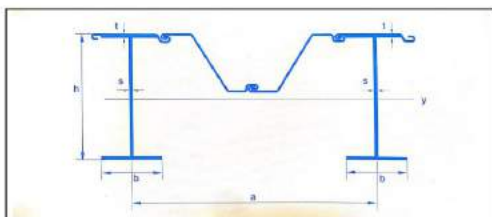
组合桩 Combined pile

另外, 可以根据项目的要求, 设计和供应如下组合桩:
 HZ组合装 (H型钢和Z型钢板桩的组合)
 OZ组合装 (钢管桩和Z型钢板桩的组合)

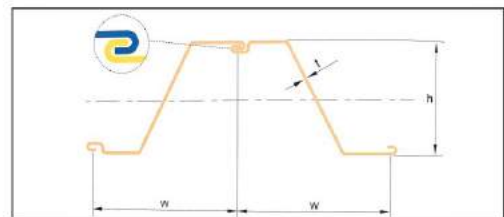
In addition, we could design and supply the combined pile according to project requirements as below:
 HZ combined pile (H shape steel and Z shape steel pile combination)
 OZ combined pile (steel pile and Z shape steel pile combination)



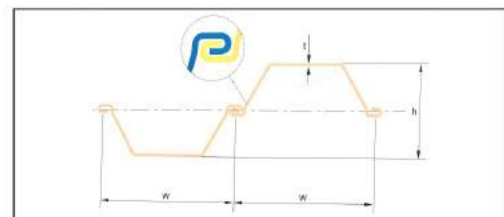
Oz桩组合图片



Hz组合装图片



Z型钢板桩



U型钢板桩



MAIN PRODUCTS
主营产品

Line pipe
管线管



用途: 用于石油、天然气工业中的气、水、油输送
标准: ISO 3183, API SPEC 5L, ASTM/A53/A106, GB/T9711, GB/T3091, GB/T13793, SY/T5037, GB/T8163.
无缝管线管规格范围: \varnothing 10mm - 1016mm.
高品直缝焊管规格范围: \varnothing 10mm - 660mm.
螺旋缝焊管规格范围: \varnothing 219mm - 2032m.
直缝埋弧焊钢管规格范围: \varnothing 323.9mm - 1422mm.
钢级: A, B, X42 - of X80; L245 - L555

Usage: For conveyance of gas, water and oil in Petroleum and Nature Gas Industries
Standard: ISO 3183, API SPEC 5L, ASTM/A53/A106, GB/T9711, GB/T3091, GB/T13793, SY/T5037, GB/T8163.
Seamless Steel Line Pipe: Size \varnothing 10mm - 1016mm.
HFW Line Pipe: Size \varnothing 10mm - 660mm.
Spiral Welded Line Pipe: Size \varnothing 219mm - 2032m.
LSAW Line Pipe: Size \varnothing 323.9mm - 1422mm.
Steel grade: A, B, X42 - of X80; L245 - L555

Fittings 管件

Standard: ASTM/A234, SY/T5257-2004, GB12459-1990, GB/T13401-1992
Size: \varnothing 26.7mm - 1016mm

标准: ASTM/A234, SY/T5257-2004, GB12459-1990, GB/T13401-1992
规格范围: \varnothing 26.7mm - 1016mm



Valves 阀门

Standard: API 6, API 6D
标准: API 6, API 6D



MAIN PRODUCTS
主营产品

Drill pipe
钻杆

标准: API SPEC 5DP, API SPEC 7.
规格范围: \varnothing 2 3/8" - 6 5/8"
钢级: E75, X95, G105, S135.

Standard: API SPEC 5DP, API SPEC 7.
Size: \varnothing 2 3/8" - 6 5/8"
Steel Grade: E75, X95, G105, S135.

规格外径 Size		名义重量 Nominal mass	计算重量 Calculated weight Wpe		钢级 Grade	壁厚 Wall Thickness		加厚形式 (见注) Upset ends (See note) for weld-on tool joint)
in.	mm	Lb/ft	lb/ft	kg/m		in.	mm	
2 3/8	60.3	6.65	6.26	9.32	E, X, G, S	0.28	7.11	EU
2 7/8	73	10.4	9.72	14.48	E, X, G, S	0.362	9.19	EU, IU
3 1/2	88.9	9.5	8.81	13.12	E	0.254	6.45	EU, IU
3 1/2	88.9	13.3	12.31	18.34	E, X, G, S	0.368	9.35	EU, IU
3 1/2	88.9	15.5	14.63	21.79	E	0.449	11.4	EU, IU
3 1/2	88.9	15.5	14.63	21.79	X, G, S	0.449	11.4	EU, IEU
4	101.6	14	12.93	19.26	E, X, G, S	0.33	8.38	EU, IU
4 1/2	114.3	13.75	12.24	18.23	E	0.271	6.88	EU, IU
4 1/2	114.3	16.6	14.98	22.31	E, X, G, S	0.337	8.56	EU, IEU
4 1/2	114.3	20	18.69	27.84	E, X, G, S	0.43	10.92	EU, IEU
5	127	16.25	14.87	22.15	X, G, S	0.296	7.52	IU
5	127	19.5	17.93	26.71	E	0.362	9.19	IEU
5	127	19.5	17.93	26.71	X, G, S	0.362	9.19	EU, IEU
5	127	25.6	24.03	35.79	E	0.5	12.7	IEU
5	127	25.6	24.03	35.79	X, G, S	0.5	12.7	EU, IEU
5 1/2	139.7	21.9	19.81	29.51	E, X, G, S	0.361	9.17	IEU
5 1/2	139.7	24.7	22.54	33.57	E, X, G, S	0.415	10.54	IEU

EU - 外加厚/External upset

IEU - 内外加厚/Internal & External upset

IU - 内加厚/Internal upset



MAIN PRODUCTS
主营产品

Tubing
油管



标准: API SPEC 5CT.

类型: 无缝&高频直缝焊管

规格范围: \varnothing 60.3mm - 114.3mm.

钢级: H40, J55, K55, N80, L80, C90, C95, T95, P110, Q125.

管端类型: STC, LTC, BTC and Premium connection

Standard: API SPEC 5CT.

Type: Seamless pipe, HFW.

Size: \varnothing 60.3mm - 114.3mm.

Steel Grade: H40, J55, K55, N80, L80, C90, C95, T95, P110, Q125.

Connection type: STC, LTC, BTC and Premium connection

规格 Size	重量代号 Linear Mass lb/ft		外径 Outside diameter		壁厚 Wall thickness		端部加工形式 Type of end-finish					
	Nonupset T & C	Ex-Upset T & C	In.	mm	In.	mm	钢级 Grade					
							J-55	L-80	N-80-1类 Q类	C-90	T-95	P-110
2 3/8"	4	--	2.375	60.33	0.167	4.24	PN	PN	PN	PN	PN	--
	4.6	4.7	2.375	60.33	0.19	4.83	PNU	PNU	PNU	PNU	PNU	PNU
	5.8	5.95	2.375	60.33	0.254	6.45	--	PNU	PNU	PNU	PNU	PNU
	6.6	--	2.375	60.33	0.295	7.49	--	P	--	P	P	--
	7.35	7.45	2.375	60.33	0.336	8.53	--	PU	--	PU	PU	--
2 7/8"	6.4	6.5	2.875	73.03	0.217	5.51	PUN	PNU	PNU	PNU	PNU	PNU
	7.8	7.9	2.875	73.03	0.276	7.01	--	PNU	PNU	PNU	PNU	PNU
	8.6	8.7	2.875	73.03	0.308	7.82	--	PNU	PNU	PNU	PNU	PNU
	9.35	9.45	2.875	73.03	0.34	8.64	--	PU	--	PU	PU	--
	10.5	--	2.875	73.03	0.392	9.96	--	P	--	P	P	--
3 1/2"	11.5	--	2.875	73.03	0.44	11.18	--	P	--	P	P	--
	7.7	--	3.5	88.9	0.216	5.49	PN	PN	PN	PN	PN	--
	9.2	9.3	3.5	88.9	0.254	6.45	PNU	PNU	PNU	PNU	PNU	PNU
	10.2	--	3.5	88.9	0.289	7.34	PN	PN	PN	PN	PN	--
	12.7	12.95	3.5	88.9	0.375	9.52	--	PNU	PNU	PNU	PNU	PNU
	14.3	--	3.5	88.9	0.43	10.92	--	P	--	P	P	--
4"	15.5	--	3.5	88.9	0.476	12.09	--	P	--	P	P	--
	17	--	3.5	88.9	0.53	13.46	--	P	--	P	P	--
	9.5	--	4	101.6	0.226	5.74	PN	PN	PN	PN	PN	PU
	--	11	4	101.6	0.262	6.65	PU	PU	PU	PU	PU	PU
	13.2	--	4	101.6	0.33	8.38	--	P	--	P	P	--
	16.1	--	4	101.6	0.415	10.54	--	P	--	P	P	--
	18.9	--	4	101.6	0.5	12.7	--	P	--	P	P	--
4 1/2"	22.2	--	4	101.6	0.61	15.49	--	P	--	P	P	--
	12.6	12.75	4.5	114.3	0.271	6.88	PNU	PNU	PNU	PNU	PNU	--
	15.2	--	4.5	114.3	0.337	8.56	--	P	--	P	P	--
	17	--	4.5	114.3	0.38	9.65	--	P	--	P	P	--
	18.9	--	4.5	114.3	0.43	10.92	--	P	--	P	P	--
	21.5	--	4.5	114.3	0.5	12.7	--	P	--	P	P	--
	23.7	--	4.5	114.3	0.56	14.22	--	P	--	P	P	--
26.1	--	4.5	114.3	0.63	16	--	P	--	P	P	--	

Non-Upset T & C—不加厚带螺纹和接箍
Ex-Upset T & C—外加厚带螺纹和接箍
P—平端/Plain end

N—不加厚带螺纹和接箍/Non-upset threaded and coupled
U—外加厚带螺纹和接箍/External upset threaded and coupled



MAIN PRODUCTS
 主营产品

Casing

 套管

标准: API SPEC 5CT.
 类型: 无缝&高频直缝焊管.
 规格范围: ϕ 114.3mm – 508mm.
 钢级: H40, J55, K55, N80, L80, C90, C95, T95, P110, Q125.
 管端类型: STC, LTC, BTC and Premium connection

Standard: API SPEC 5CT.
Type: Seamless pipe, HFW
Size: ϕ 114.3mm – 508mm.
Steel Grade: H40, J55, K55, N80, L80, C90, C95, T95, P110, Q125.
Connection type: STC, LTC, BTC and Premium connection

规格 Size	重量代号 Linear Mass lb/ft	外径 Outside diameter		壁厚 Wall thickness		端部加工形式 Type of end-finish							
		In.	mm	In.	mm	钢级 Grade							
						H-40	J-55 K-55	M-65	L-80 C-95	N-80 1类、Q类	C-90 T-95	P-110	Q-125
4 1/2"	9.5	4.5	114.3	0.205	5.21	PS	PS	PS	--	--	--	--	--
	10.5	4.5	114.3	0.224	5.69	--	PSB	PSB	--	--	--	--	--
	11.6	4.5	114.3	0.25	6.35	--	PSLB	PLB	PLB	PLB	PLB	PLB	--
	13.5	4.5	114.3	0.29	7.37	--	--	PLB	PLB	PLB	PLB	PLB	--
	15.1	4.5	114.3	0.337	8.56	--	--	--	--	--	--	PLB	PLB
5"	11.5	5	127	0.22	5.59	--	PS	PS	--	--	--	--	--
	13	5	127	0.253	6.43	--	PSLB	PSLB	--	--	--	--	--
	15	5	127	0.296	7.52	--	PSLB	PLB	PLB	PLB	PLB	PLB	--
	18	5	127	0.362	9.19	--	--	PLB	PLB	PLB	PLB	PLB	PLB
	21.4	5	127	0.437	11.1	--	--	PLB	PLB	PLB	PLB	PLB	PLB
	23.2	5	127	0.478	12.14	--	--	--	PLB	PLB	PLB	PLB	PLB
	24.1	5	127	0.5	12.7	--	--	--	PLB	PLB	PLB	PLB	PLB
5 1/2"	14	5.5	139.7	0.244	6.2	PS	PS	PS	--	--	--	--	--
	15.5	5.5	139.7	0.275	6.98	--	PSLB	PSLB	--	--	--	--	--
	17	5.5	139.7	0.304	7.72	--	PSLB	PLB	PLB	PLB	PLB	PLB	--
	20	5.5	139.7	0.361	9.17	--	--	PLB	PLB	PLB	PLB	PLB	--
	23	5.5	139.7	0.415	10.54	--	--	PLB	PLB	PLB	PLB	PLB	PLB
	26.8	5.5	139.7	0.5	12.7	--	--	--	--	--	P	--	--
	29.7	5.5	139.7	0.562	14.27	--	--	--	--	--	P	--	--
	32.6	5.5	139.7	0.625	15.87	--	--	--	--	--	P	--	--
	35.3	5.5	139.7	0.687	17.45	--	--	--	--	--	P	--	--
	38	5.5	139.7	0.75	19.05	--	--	--	--	--	P	--	--
	40.5	5.5	139.7	0.812	20.62	--	--	--	--	--	P	--	--
6 5/8"	20	6.625	168.28	0.288	7.32	PS	PSLB	PSLB	--	--	--	--	--
	24	6.625	168.28	0.352	8.94	--	PSLB	PLB	PLB	PLB	PLB	PLB	--
	28	6.625	168.28	0.417	10.59	--	--	PLB	PLB	PLB	PLB	PLB	--
	32	6.625	168.28	0.475	12.06	--	--	--	PLB	PLB	PLB	PLB	PLB
	35.3	6.625	168.28	0.53	13.53	--	--	--	PLB	PLB	PLB	PLB	PLB
7"	17	7	177.8	0.231	5.87	PS	--	--	--	--	--	--	--
	20	7	177.8	0.272	6.91	PS	PS	PS	--	--	--	--	--
	23	7	177.8	0.317	8.05	--	PSLB	PLB	PLB	PLB	PLB	PLB	--
	26	7	177.8	0.362	9.19	--	PSLB	PLB	PLB	PLB	PLB	PLB	--
	29	7	177.8	0.408	10.36	--	--	PLB	PLB	PLB	PLB	PLB	--



MAIN PRODUCTS
主营产品

Casing
套管



规格 Size	重量代号 Linear Mass lb/ft	外径 Outside diameter		壁厚 Wall thickness		端部加工形式 Type of end-finish							
		In.	mm	In.	mm	钢级 Grade							
						H-40	J-55 K-55	M-65	L-80 C-95	N-80 1类、Q类	C-90 T-95	P-110	Q-125
7"	32	7	177.8	0.453	11.51	--	--	PLB	PLB	PLB	PLB	PLB	--
	35	7	177.8	0.498	12.65	--	--	--	PLB	PLB	PLB	PLB	PLB
	38	7	177.8	0.54	13.72	--	--	--	PLB	PLB	PLB	PLB	PLB
	42.7	7	177.8	0.625	15.87	--	--	--	--	--	P	--	--
	46.4	7	177.8	0.687	17.45	--	--	--	--	--	P	--	--
	50.1	7	177.8	0.75	19.05	--	--	--	--	--	P	--	--
	53.6	7	177.8	0.812	20.62	--	--	--	--	--	P	--	--
	57.1	7	177.8	0.875	22.23	--	--	--	--	--	P	--	--
7 5/8"	24	7.625	193.68	0.3	7.62	PS	-	-	-	-	-	-	-
	26.4	7.625	193.68	0.328	8.33	-	PSLB	PSLB	PLB	PLB	PLB	PLB	-
	29.7	7.625	193.68	0.375	9.53	-	-	PLB	PLB	PLB	PLB	PLB	-
	33.7	7.625	193.68	0.43	10.92	-	-	PLB	PLB	PLB	PLB	PLB	-
	39	7.625	193.68	0.5	12.7	-	-	-	PLB	PLB	PLB	PLB	PLB
	42.8	7.625	193.68	0.562	14.27	-	-	-	PLB	PLB	PLB	PLB	PLB
	45.3	7.625	193.68	0.595	15.11	-	-	-	PLB	PLB	PLB	PLB	PLB
	47.1	7.625	193.68	0.625	15.88	-	-	-	PLB	PLB	PLB	PLB	PLB
	51.2	7.625	193.68	0.687	17.45	-	-	-	-	-	P	-	-
55.3	7.75	193.68	0.75	19.05	-	--	-	-	-	P	-	-	
7 3/4"	46.1	8.625	219.08	0.595	15.11	-	-	-	P	P	P	P	P
8 5/8"	24	8.625	219.08	0.264	6.71	-	PS	PS	-	-	-	-	-
	28	8.625	219.08	0.304	7.72	PS	-	PS	-	-	-	-	-
	32	8.625	219.08	0.352	8.94	PS	PSLB	PSLB	-	-	-	-	-
	36	8.625	219.08	0.4	10.16	-	PSLB	PSLB	PLB	PLB	PLB	PSLB	-
		8.625	219.08	0.45	11.43	-	-	PLB	PLB	PLB	PLB	PLB	-
	44	8.625	219.08	0.5	12.7	-	-	-	PLB	PLB	PLB	PLB	-
	49	9.625	244.28	0.557	14.15	-	-	-	PLB	PLB	PLB	-	PLB
9 5/8"	32.3	9.625	244.48	0.312	7.92	PS	-	-	-	-	-	-	-
	36	9.625	244.48	0.352	8.94	PS	PSLB	PSLB	-	-	-	-	-
	40	9.625	244.48	0.395	10.03	-	PSLB	PSLB	PLB	PLB	PLB	PLB	-
	43.5	9.625	244.48	0.435	11.05	-	-	PLB	PLB	PLB	PLB	PLB	-
	47	9.625	244.48	0.472	11.99	-	-	PLB	PLB	PLB	PLB	PLB	PLB
	53.5	9.625	244.48	0.545	13.84	-	-	-	PLB	PLB	PLB	PLB	PLB
	58.4	9.625	244.48	0.595	15.11	-	-	-	PLB	PLB	PLB	-	PLB
	59.4	9.625	244.48	0.609	15.57	-	-	-	-	-	P	-	-
	64.9	9.625	244.48	0.672	17.07	-	-	-	-	-	P	-	-
	70.3	9.625	244.48	0.734	18.64	-	-	-	-	-	P	-	-
75.6	9.625	244.48	0.797	20.24	-	-	-	-	-	P	-	-	

P - 平端/Plain end
S - 短圆螺纹/Short round thread

L - 长圆螺纹/Long round thread
B - 偏梯形螺纹/Buttress thread



MAIN PRODUCTS
主营产品

Casing
套管



标准: API SPEC 5CT.
类型: 无缝&高频直缝焊管.
规格范围: ϕ 114.3mm – 508mm.
钢级: H40, J55, K55, N80, L80, C90, C95, T95, P110, Q125.
管端类型: STC, LTC, BTC and Premium connection

Standard: API SPEC 5CT.
Type: Seamless pipe, HFW
Size: ϕ 114.3mm – 508mm.
Steel Grade: H40, J55, K55, N80, L80, C90, C95, T95, P110, Q125.
Connection type: STC, LTC, BTC and Premium connection

规格 Size	重量代号 Linear Mass lb/ft	外径 Outside diameter		壁厚 Wall thickness		端部加工形式 Type of end-finish							
		In.	mm	In.	mm	H-40	钢级 Grade						
							J-55 K-55	M-65	L-80 C-95	N-80 1类、Q类	C-90 T-95	P-110	Q-125
10 3/4"	32.75	10.75	273.05	0.279	7.09	PS	-	-	-	-	-	-	-
	40.5	10.75	273.05	0.35	8.89	PS	PSB	PSB	-	-	-	-	-
	45.5	10.75	273.05	0.4	10.16	-	PSB	PSB	-	-	-	-	-
	51	10.75	273.05	0.45	11.43	-	PSB	PSB	PSB	PSB	PSB	PSB	-
	55.5	10.75	273.05	0.468	12.57	-	-	PSB	PSB	PSB	PSB	PSB	-
	60.7	10.75	273.05	0.545	13.84	-	-	-	-	-	PSB	PSB	PSB
	65.7	10.75	273.05	0.595	15.11	-	-	-	-	-	PSB	PSB	PSB
	73.2	10.75	273.05	0.672	17.07	-	-	-	-	-	P	-	-
11 3/4"	79.2	10.75	273.05	0.734	18.64	-	-	-	-	-	P	-	-
	85.3	10.75	273.05	0.797	20.24	-	-	-	-	-	P	-	-
	42	11.75	298.45	0.333	8.46	PS	-	-	-	-	-	-	-
	47	11.75	298.45	0.375	9.53	-	PSB	PSB	-	-	-	-	-
	54	11.75	298.45	0.435	11.05	-	PSB	PSB	-	-	-	-	-
13 3/8"	65	11.75	298.45	0.534	13.56	-	-	-	P	P	P	P	P
	71	11.75	298.45	0.582	14.78	-	-	-	P	P	P	P	P
	48	13.375	339.73	0.33	8.38	PS	-	-	-	-	-	-	-
	54.5	13.375	339.73	0.38	9.65	-	PSB	PSB	-	-	-	-	-
	61	13.375	339.73	0.43	10.92	-	PSB	PSB	-	-	-	-	-
16"	68	13.375	339.73	0.48	12.19	-	PSB	PSB	PSB	PSB	PSB	PSB	-
	72	13.375	339.73	0.514	13.06	-	-	-	PSB	PSB	PSB	PSB	PSB
	65	16	406.4	0.375	9.53	PS	-	-	-	-	-	-	-
	75	16	406.4	0.438	11.13	-	PSB	PSB	-	-	-	-	-
	84	16	406.4	0.495	12.75	-	PSB	PSB	-	-	-	-	-
18 5/8"	109	16	406.4	0.656	16.66	-	P	-	P	P	-	P	P
	87.5	18.625	473.08	0.435	11.05	PS	PSB	PSB	-	-	-	-	-
	94	20	508	0.438	11.13	PSL	PSLB	PSLB	-	-	-	-	-
20"	106.5	20	508	0.5	12.7	-	PSLB	PSLB	-	-	-	-	-
	133	20	508	0.635	16.13	-	PSLB	-	-	-	-	-	-

P - 平端/Plain end
S - 短圆螺纹/Short round thread

L - 长圆螺纹/Long round thread
B - 偏梯形螺纹/Buttress thread



MAIN PRODUCTS
 主营产品

PC steel bar

预应力钢棒

PC钢棒是一种低碳合金钢热处理高强度预应力混凝土用钢筋，它主要应用于制作港口混凝土管桩、高层建筑地基混凝土管桩、桥墩混凝土管桩等。

PC bar is a kind of low carbon alloy steel bar with heat treatment for high strength pre-stressed concrete pile. It is mainly used in producing port concrete pile, high-rise building foundation concrete pile and pier concrete pile, etc.



规格 Specification (mm)	表面形状 类型 Groove direction	横截面积 Cross-sectional size (S/mm ²)	抗拉强度 Tensile Strength (MPA)	规定塑性延伸 强度Plastic elongation strength(Mpa)	松弛率 Relaxation rate (%)	最大力总伸长 率Percentage of elongation at maximum force (%)	伸直性 Elogation (MM/M)	断后伸长率 Percentage elongation after fracture (%)	表面质量 Surface quality
7.1	螺旋槽 Spiralgroove	39.0-41.7	≥1420	≥1280	≤2.0	≥3.5	取一米长度钢棒，放置在一个平面上，其弦和弧内侧最大的自然矢高小于5.0mm。 Take a one-meter PC bar and place it on a flat surface, and the maximum natural rise of inside chord and arc is less than 5.0 mm.	≥7.0	钢棒表面不得有影响使用的有害损伤和缺陷，但允许有浮锈 No damage and defects which will influence the use is allowed on the surface of the PC bar. Floating rust is allowed.
9.0		62.4-66.5							
10.7		87.8-93.6							
12.6		121.9-130.1							
14.0		150.2-160.1							



MAIN PRODUCTS
 主营产品

END PLATE
 端板

我公司按照建材行业标准生产外径为300mm、400mm、500mm、600mm、700mm、800mm、900mm、1000mm的各规格端板；对于国外客户，我司也可以按照客户图纸生产250mm、300mm、350mm、400mm、450mm、500mm、600mm、700mm、800mm、900mm、1000mm规格端板。

Specifications: external diameter: 300mm, 400mm, 500mm, 600mm, 700mm, 800mm, 900mm, 1000mm (according to the industrial standards); customized specifications: 250mm, 300mm, 350mm, 400mm, 450mm, 500mm, 600mm, 700mm, 800mm, 900mm, 1000mm (according to the customers' drawings).



外径OD (mm)	内径ID (mm)	厚度 Thickness (mm)	材质 Material	执行标准 Executive Standard
300	160-180	12-24	Q235, SS400	JC/T947-2005、 国标图集10G409 JC/T947-2005、 National Drawings10G409
350	210-220			
400	210-240			
450	240-290			
500	250-320			
600	340-400			
700	440-480			
800	440-480			
900	540-640			
1000	540-640			
1200	640-900			



MAIN PRODUCTS
 主营产品

Forged Grinding balls

锻造耐磨钢球

广泛应用于冶金矿山、水泥厂、火电厂、新型建材、磁性材料等领域球磨机用研磨材料。

Widely used as grinding material for ball mill in many areas such as metallurgical mines, cement plants, power plants, new construction materials and magnetic materials.

化学成分

Chemical Elements

材质 Material	化学成份 Chemical Elements (%)					
	C	Mn	Si	Cr	S	P
50Mn	0.48-0.56	0.70-1.0	0.17-0.37	≤0.25	≤0.035	≤0.035
60Mn	0.57-0.65	0.50-0.80	0.17-0.37	≤0.25	≤0.035	≤0.035
65Mn	0.62-0.70	0.90-1.2	0.17-0.37	≤0.25	≤0.035	≤0.035
75Mn	0.72-0.92	0.7-1.2	0.17-0.37	0.4-0.6	≤0.035	≤0.035
75MnCr	0.70-0.85	0.7-0.8	0.17-0.37	0.2-0.7	≤0.03	≤0.03
75SiMn	0.70-0.90	0.7-1.2	0.4-0.8	≤0.25	≤0.03	≤0.03
B2	0.70-0.85	0.7-0.8	0.17-0.37	0.2-0.7	≤0.035	≤0.035
40Cr	0.37-0.44	0.5-0.8	0.17-0.37	0.8-1.10	≤0.035	≤0.035
45#	0.42-0.5	0.5-0.8	0.17-0.37	≤0.25	≤0.035	≤0.035

力学性能与金相组织

Physical property & Microstructure

材质 Material	冲击值	落球次数	表面硬度	球心硬度
	AK.j/cm2	Falling Ball Times	Surface HRC	Core HRC
50Mn	≥ 12	≥ 10000	≥ 56	≥ 48
60Mn	≥ 15	≥ 12000	≥ 58	≥ 50
65Mn	≥ 15	≥ 12000	≥ 60	≥ 50
75Mn	≥ 17	≥ 12000	≥ 60	≥ 52
75MnCr	≥ 16	≥ 12000	≥ 60	≥ 50
75SiMn	≥ 17	≥ 12000	≥ 60	≥ 54
B2	≥ 15	≥ 12000	≥ 60	≥ 50
40Cr	≥ 12	≥ 12000	≥ 60	≥ 48
45#	≥ 12	≥ 12000	≥ 52	≥ 45

产品规格

Specification

 尺寸
Size
(MM)

Φ20、Φ25、Φ30、
 Φ40、Φ50、Φ60、
 Φ70、Φ80、Φ90、
 Φ100、Φ110、
 Φ120、Φ130、
 Φ140、Φ150



MAIN PRODUCTS
 主营产品

Casting Gring Cylpebs

铸造耐磨钢锻


钢锻广泛应用于冶金矿山、水泥厂、火电厂、新型建材、磁性材料等领域球磨机用研磨材料。

Widely used as grinding material for ball mill in many areas such as metallurgical mines, cement plants, power plants, new construction materials and magnetic materials.

化学成分

Chemical Elements

名称 name	化学成份 Chemical Elements (%)							
	C	Si	Mn	Cr	Mo	Cu	P	S
高铬合金铸锻 High Cr cylpebs	2.0-3.3	≤1.2	0.3-1.5	10-13	0-3.0	0-1.2	≤0.1	≤0.06
中铬合金铸锻 Medium Cr cylpebs	2.0-3.3	≤1.2	0.3-1.5	3-6	0-1.0	0-1.2	≤0.1	≤0.06
低铬合金铸锻 Low Cr cylpebs	2.1-3.6	≤1.2	0.3-1.5	1-3	0-1.0	0-0.8	≤0.1	≤0.1

力学性能

Physical Property

名称 name	表面硬度 HRC
高铬合金铸锻 High Cr cylpebs	≥58
中铬合金铸锻 Medium Cr cylpebs	≥48
低铬合金铸锻 Low Cr cylpebs	≥45

产品规格

Specification

高铬合金铸锻 High Cr cylpebs	Φ10、Φ12、Φ14、Φ16、 Φ18、Φ20、Φ25、Φ30、 Φ35、Φ40、Φ45、Φ50
中铬合金铸锻 Medium Cr cylpebs	
低铬合金铸锻 Low Cr cylpebs	



MAIN PRODUCTS

主营产品

Low relaxation PC strand

预应力钢绞线

低松弛预应力钢绞线是公司重点发展的产品，应用领域定位于铁路、公路、桥梁、矿山、核电站、水力、大跨度建筑等高端混凝土结构配套。

Low relaxation PC strand is one of the most important products in our enterprise, which is used for the high-end concrete structure such as railways, highways, bridges, mine, nuclear power plant, hydropower, large-span buildings and so on.

规格 Specification

序号 No.	规格Size (mm)	强度级别Strength (Mpa)	执行标准 Executive Standard	1000h松弛率Relaxation (%)
1	1*7-9.53~17.78	1860		≤2.5
2	1*7-12.70~17.78	1860	ASTM A416-2006	
3	1*7-9.3~15.7	1770	BS5896:1980	
4	1*7-11.1	1870	AS/NZS 4672-2007	
5	1*7-9.5~15.2	1725	ASTM A416-2006	
6	1*7-12.7	1860	GB/T 5224-2003	
7	1*7-12.9	1840	AS/NZS 4672-2007	
8	模拔1*7-15.2	1820	BS 5896:1980	
9	1*7-15.2	1790-1860	AS/NZS 672-2007	
10	1*7-15.2~15.7	1860	PrEN 10138-3-2004	
11	1*7-15.2~18.0	Super Grade	AS 1311-1987	
12	1*7-15.20	1860/1960 1570	GB/T 5224-2003	
13	1*7-15.70	1860	GB/T 5224-2003	
14	1*7-17.78	1860	ASTM A416-2006	
15	1*7-17.80	1860	GB/T5224-2003	
16	1*7-18.0	1860	Q/12YB3150-2010	
17	1*7-18.90	1720 1820	Q/12YB3150-2010	
18	1*7-9.3	1720	AS/NZ4672	
19	1*7-9.3~11.0	1770	BS 5896:1980	
20	1*7-9.3~12.9	1860	PrEN 10138-3	
21	1*7-9.3~12.7	Super Grade	AS 1311-1987	
22	1*7-18.0	1850	AS/NZ 4672	
23	1*7-9.50~11.10	1860	GB/T 5224-2003	
24	1*7-9.6~12.9	1860	BS 5896:1980	
25	模拔1*7-15.20	1820	GB/T 5224-2003	
26	1*7-21.6	1770-1860	GB/T 5224-2003修改	
27	1*19-17.80	1860-1960	Q/12YB3159-2010 JISG3536:2008	
28	1*19-19.30	1860-1960		
29	1*19-20.30	1810-1860		
30	1*19-21.80	1770-1860		
31	1*19-28.60	1720-1770		



MAIN PRODUCTS

主营产品

Prestressed steel wire 预应力钢丝

预应力钢丝可以按直径、强度级别、表面镀层或横截面形态分类:

- 1、按直径可以分类为: 4mm, 4.8mm, 5.0mm, 5.1mm, 6.0mm, 6.25mm, 7.0mm, 7.8mm, 8.0mm, 9.0mm, 9.5mm, 10.0mm, 11mm, 12mm等。
- 2、按照强度级别可分类为:中强度预应力钢丝800~1200MPa; 高强度预应力钢丝 1470MPa, 1570MPa, 1670MPa, 1770MPa和1860MPa等。
- 3、按照表面镀层可分类为: 无镀层预应力钢丝、涂环氧树脂预应力钢丝和镀锌预应力钢丝。
- 4、按照表面形态可分类为: 光圆预应力钢丝、螺旋肋(spiral ribbed or helix grooved) 预应力钢丝(左旋或右旋)、压波(crimped) 预应力钢丝或刻痕(indented) 预应力钢丝(两面刻痕、三面刻痕、四面刻痕)等。
- 5、按照处理工艺可分类为: 冷拉预应力钢丝(没有松弛性能要求)和低松弛预应力钢丝。

Prestressed steel wire could be classified by diameter, strength, surface coating or cross section morphology.

1. classified by diameter: 4mm, 4.8mm, 5.0mm, 5.1mm, 6.0mm, 6.25mm, 7.0mm, 7.8mm, 8.0mm, 9.0mm, 9.5mm, 10.0mm, 11mm, 12mm, etc.
2. classified by strength: medium strength Prestressed steel wire 800~1200MPa, high strength Prestressed steel wire 1470MPa, 1570MPa, 1670MPa, 1770MPa and 1860MPa.
3. classified by surface coating: no surface coating prestressed steel wire, epoxy resin coated prestressed steel wire and galvanized prestressed steel wire.
4. classified by cross section morphology: plain prestressed steel wire, spiral ribbed prestressed steel wire (left or right direction), crimped prestressed steel wire, intended prestressed steel wire(two side intended, three side intended, four side intended)etc.
5. classified by processing: cold drawn prestressed steel wire (no relaxation requirements) and low relaxation prestressed steel wire.

应用 Application

冷拉预应力一般用于管道, 尤其是用PCCP工艺制作的管道。低松弛预应力钢丝广泛应用于铁路轨枕和预应力混凝土电杆, 少量用于建筑构件, 预制梁已基本不采用。低松弛的镀锌预应力钢丝常用于斜拉桥(cable stayed bridge)的桥索、钢管拱桥的吊杆(tie rod)及制作用于大跨度建筑的预应力索, 不经过稳定化处理的镀锌钢丝一般用于悬索桥(suspension bridge)的桥索。

Cold drawn prestressed steel wire is normally used for pipe, especially used for PCCP processed pipeline, low relaxation prestressed steel wire is widely used for railway sleeper and prestressed concrete pole, and small amount used for building components, and almost not used for prefabricated beams. low relaxation galvanized prestressed steel wire always used for bridge cable of cable stayed bridge, tie rod of Steel pipe arch bridge and also used for the production of prestressed cables for long-span buildings, galvanized steel wires without stabilizing treatment are generally used for bridge cables of suspension bridges.

标准 Standard

GB/T 5223-2002 BS 5896-1980 ASTM A421 ASTM A648



MAIN PRODUCTS
主营产品

Equipment
设备



我司销售管桩生产设备、电线杆生产设备、混凝土产品模具等，也可根据客户需求量身设计与工程总装管桩生产线，如直行线、回型线、泵送线等。

We are supplying pile manufacturing equipment, utility pole production equipment, modules of precast concrete products, etc., customized designing according to customers' special requirements and engineering final assembly for pile production bases are acceptable, such as straight line, circuit line, pumping line, etc..



液压单臂提升机构
Hydraulic One-armed Lifting Mechanism



管模输送链条机
Pipe Chain Conveyor



离心机
Centrifugal Machine



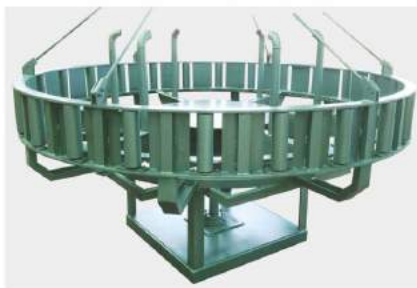
滚焊机
Roll Welding Maching



自动夹具
Automatic Fixture



自动剪板机
Automatic Plate Shearing Machine



切断机料盘
Material Tray of Cutting Machine



立式卷扬机
Vertical Winch



自动压型机
Automatic Moulding Press



MAIN PRODUCTS
主营产品

Equipment
设备



自动墩头翻转机
Automatic Heading&turning Machine



混凝土管桩模具
Concrete Pipe Mould(Square)



混凝土管桩模具
Concrete Pipe Mould(Round)



电线杆模具
Utility Pole Mould



预应力实心方模
Prestressed Solid Square Mould



铆合机
Riveting Machine



接桩器
Pipe Connector



气动扳手
Air Impact Wrenches



合模张拉螺丝
Tensioning Clamping Screws

